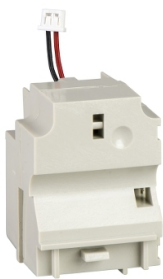


# Product datasheet

Specifications



Fault discrimination device, TeSys GV7, 110 to 240VAC, for differentiation of thermal overload and magnetic fault

GV7AD112

⚠ Discontinued

⚠ Discontinued on: 1 Jan 2008

⚠ End-of-service on: 31 Aug 2023

## Main

Range	TeSys
Product Or Component Type	Fault discrimination device
Range Compatibility	TeSys TeSys GV7

## Complementary

Function Available	Differentiation of thermal overload and magnetic fault
Mounting Location	Inside of the front panel
Auxiliary Contacts Operation	Fault signal
[Ue] Rated Operational Voltage	110 V DC for control circuit 240 V DC for control circuit 110 V AC 50/60 Hz for control circuit 240 V AC 50/60 Hz for control circuit
Net Weight	0.1 kg
Quantity Per Set	Set of 10

## Packing Units

Unit Type Of Package 1	PCE
Number Of Units In Package 1	1
Package 1 Height	4.0 cm
Package 1 Width	4.8 cm
Package 1 Length	5.3 cm
Package 1 Weight	36.0 g

## Contractual warranty

Warranty	18 months
----------	-----------

Disclaimer: This documentation is not intended as a substitute for and is not to be used for determining suitability or reliability of these products for specific user applications

# Sustainability

**Green Premium™ label** is Schneider Electric’s commitment to delivering products with best-in-class environmental performance. Green Premium promises compliance with the latest regulations, transparency on environmental impacts, as well as circular and low-CO<sub>2</sub> products.

**Guide to assessing product sustainability** is a white paper that clarifies global eco-label standards and how to interpret environmental declarations.

[Learn more about Green Premium >](#)

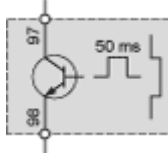
[Guide to assess a product’s sustainability >](#)

## Well-being performance

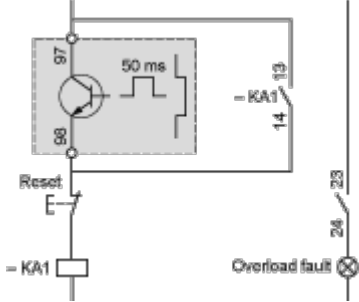
<div><div>✓</div><div>Reach Free Of Svhc</div></div>	
<div><div>✓</div><div>Toxic Heavy Metal Free</div></div>	
<div><div>✓</div><div>Mercury Free</div></div>	
<div><div>✓</div><div>Rohs Exemption Information</div></div>	<div>Yes</div>
<div>Reach Regulation</div>	<div><a href="#">REACH Declaration</a></div>
<div>Eu Rohs Directive</div>	<div>Compliant</div> <div><a href="#">EU RoHS Declaration</a></div>
<div>China Rohs Regulation</div>	<div><a href="#">China RoHS declaration</a></div> <div>Pro-active China RoHS declaration (out of China RoHS legal scope)</div>
<div>Weee</div>	<div>The product must be disposed on European Union markets following specific waste collection and never end up in rubbish bins</div>

Connections and Schema

Electric Trips  
GV7AD111, AD112



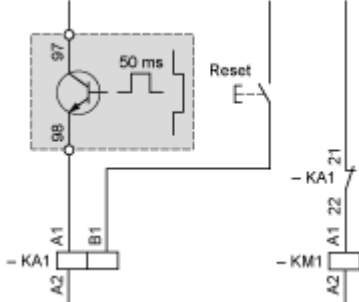
Recommended Application Schemes GV7AD111, AD112  
Fault indication



Associated components

KA1: CA2KN or CADN

Contactor opening on overload



Associated components KA1: CAD + LAD6K10 or RHKKM1: LC1 D or LC1 F

KA1: CAD + LAD6K10 or RHK

KM1: LC1 D or LC1 F