



SINOVA, onload changeover switches 3KJ0, manually operated, size 5, 4-pole, in open execution, I<sub>u</sub>: 3150 A, U<sub>e</sub> AC: 415 V, I<sub>e</sub> at AC-21 B at 415 V: 3150 A, screw mounting, front operating mechanism, at the left end, complete unit with door operating mechanism, Metallic handle, grey and black colour, flat terminal

Model	
product brand name	SINOVA
product designation	3KJ0 On-load changeover switches
design of the product	manually operated
display version for switch position indicator door-coupling rotary operating mechanism	I ON- O OFF- II ON
design of the actuating element	Door-coupling rotary operating mechanism
design of handle	with
type of the driving mechanism	Front operating mechanism
type of the driving mechanism motor drive	No
number of poles	4
size of switch disconnecter	5
mechanical service life (operating cycles) for function sequence O-I-O typical	900
position of the switch operating mechanism	at the left end
overvoltage category	III
degree of pollution	3
insulation voltage rated value	1 000 V
operational current at AC rated value	3 150 A
protection class IP	IP00
protection class IP <ul style="list-style-type: none"><li>• with closed switch with cover or cable lug cover</li><li>• on the front</li></ul>	IP00 IP00
power loss [W] with conventional rated thermal current <ul style="list-style-type: none"><li>• per pole</li><li>• per device</li></ul>	140 W 560 W
number of connected NC contacts for auxiliary contacts	0
number of connected NO contacts for auxiliary contacts	0
number of connected CO contacts for auxiliary contacts	0
number of CO contacts for auxiliary contacts	0
number of NC contacts for auxiliary contacts	2
number of NO contacts for auxiliary contacts	2
suitability for use <ul style="list-style-type: none"><li>• main switch</li><li>• switch disconnecter</li><li>• EMERGENCY OFF switch</li><li>• safety switch</li><li>• maintenance/repair switch</li></ul>	Yes Yes Yes Yes Yes
product feature interlock	No
product extension auxiliary switch	Yes
product extension optional	

• motor drive	No
• voltage trigger	No
<b>type of connectable conductor cross-sections</b>	
• for copper busbar	3x (100x10 mm)
<b>type of connectable conductor cross-sections for copper conductor</b>	
• stranded with lug according to DIN 46234	3x (100x10 mm <sup>2</sup> )
type of electrical connection for main current circuit	flat terminal
<b>height</b>	326 mm
<b>width</b>	556 mm
<b>depth</b>	521 mm
<b>type of device</b>	fixed mounting
<b>fastening method</b>	Screw fixing
<b>fastening method</b>	
• 4-hole front mounting	No
• front mounting with central attachment	No
• rail mounting	No
<b>mounting position</b>	Wall,Horizontal
<b>net weight</b>	139 000 g
ambient temperature during operation	
• minimum	-5 °C
• maximum	40 °C
ambient temperature during storage	
• minimum	-10 °C
• maximum	70 °C

#### Approvals Certificates

##### Test Certificates

[Type Test Certificates/Test Report](#)

#### Further information

##### Information on the packaging

<https://support.industry.siemens.com/cs/ww/en/view/109813875>

##### Information- and Downloadcenter (Catalogs, Brochures,...)

<http://www.siemens.com/lowvoltage/catalogs>

##### Industry Mall (Online ordering system)

<https://mall.industry.siemens.com/mall/en/en/Catalog/product?mlfb=3KJ0560-4AA30-0AA0>

##### Service&Support (Manuals, Certificates, Characteristics, FAQs,...)

<https://support.industry.siemens.com/cs/ww/en/ps/3KJ0560-4AA30-0AA0>

##### Image database (product images, 2D dimension drawings, 3D models, device circuit diagrams, ...)

[http://www.automation.siemens.com/bilddb/cax\\_en.aspx?mlfb=3KJ0560-4AA30-0AA0](http://www.automation.siemens.com/bilddb/cax_en.aspx?mlfb=3KJ0560-4AA30-0AA0)

##### CAX-Online-Generator

<http://www.siemens.com/cax>

##### Tender specifications

<http://www.siemens.com/specifications>



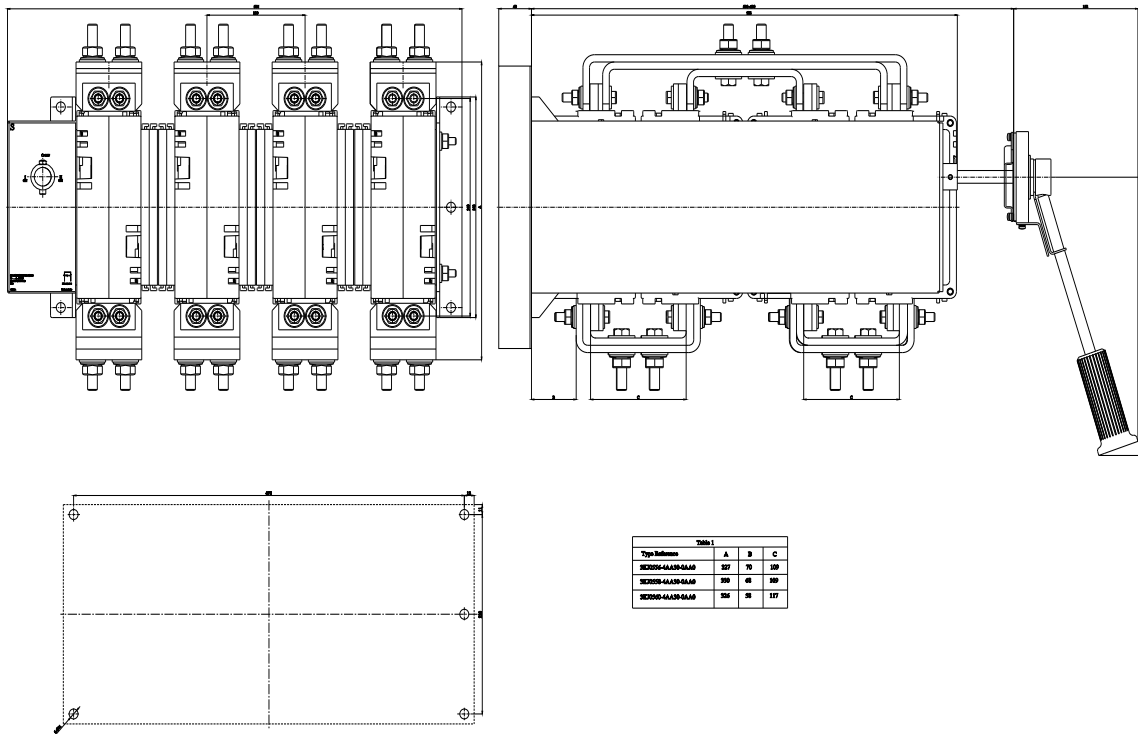


Table 1			
Type Reference	A	B	C
3KJ05604AA300AA0	257	76	258
3KJ05604AA300AA0	191	46	192
3KJ05604AA300AA0	156	36	157

