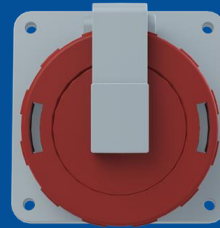


416RAU6W

Panel mounted socket

2CMA167030R1000



Socket-outlet, panel mounting, earthing sleeve position 6h, rated current 16A, IP67 watertight, unified flange, angled, 3-poles+neutral+earth, frequency 50-60 Hz, color code Red

GENERAL

Product Name	Panel mounted socket
Product ID	2CMA167030R1000
Function	Socket outlet, panel mounting, unified flange, angled
EAN	739269662
Catalog Description	Socket-outlet, panel mounting, 6h, 16A, IP67, unified flange, angled, 3P+N+E
Country of Origin	Czech Republic (CZ)
E-Number Finland	2421268
E-Number Norway	1561923
E-Number Sweden	E2416712
Standards	IEC 60309-1, -2
RoHS Status	Following EU Directive 2011/65/EU

DIMENSIONS

Product Net Width	104 millimetre
Product Net Height	104 millimetre
Product Net Length	104 millimetre
Product Net Depth	104 millimetre
Product Net Weight	0.18 kilogram

TECHNICAL

Product Main Type	TRAU
Color	Red
Number of Poles	5
Clock Position	6Hour
Rated Current	16 ampere
Rated Voltage	200/346 ... 240/415 volt
Frequency	50 hertz 60 hertz
Degree of Protection	IP67 IP69
Cable Cross-Section	1.5...4 mm ²
Housing Material	Thermoplastic (PBT)
Plug Angle	Angled
Product Group	Tough&Safe

PACKAGING

Package Width	110 millimetre
Package Height	110 millimetre
Package Gross Weight	0.18 kilogram
Package Length	110 millimetre
Package Units	box 1 piece